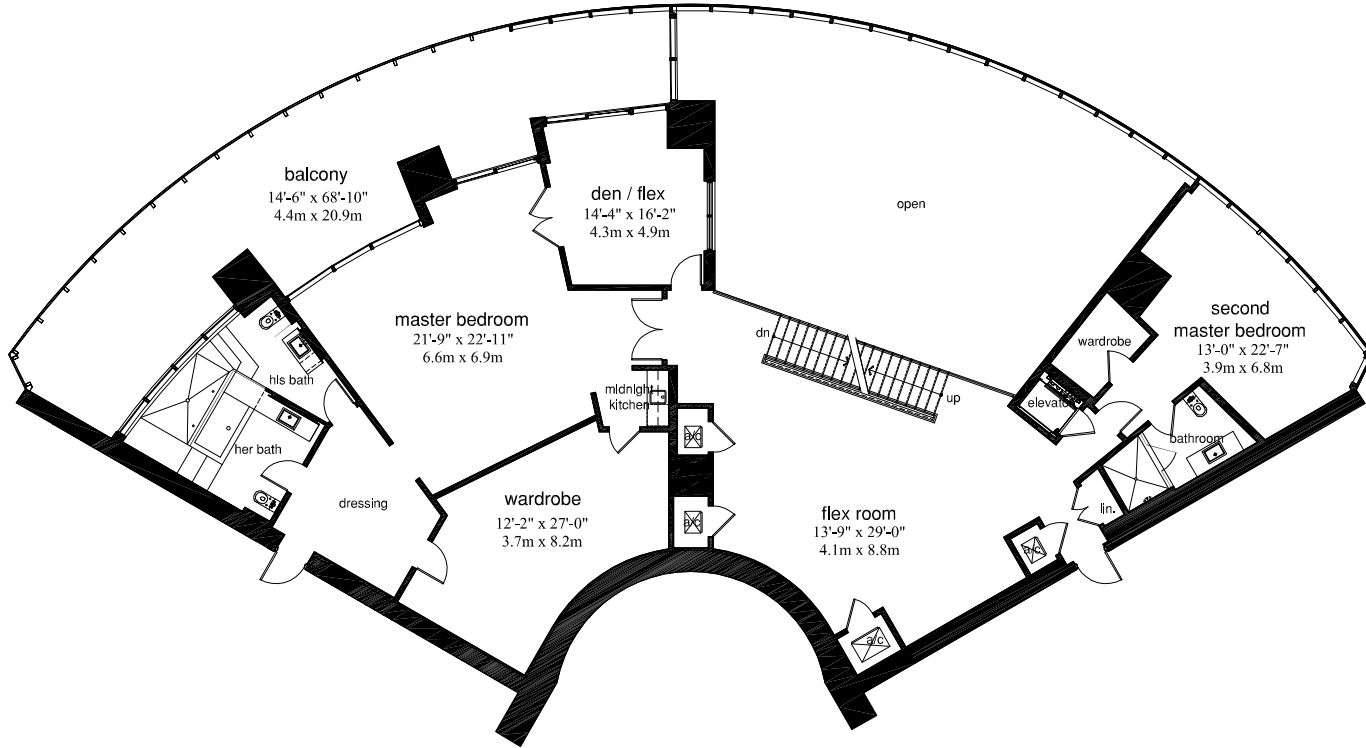


## UNIT 'PH-A'

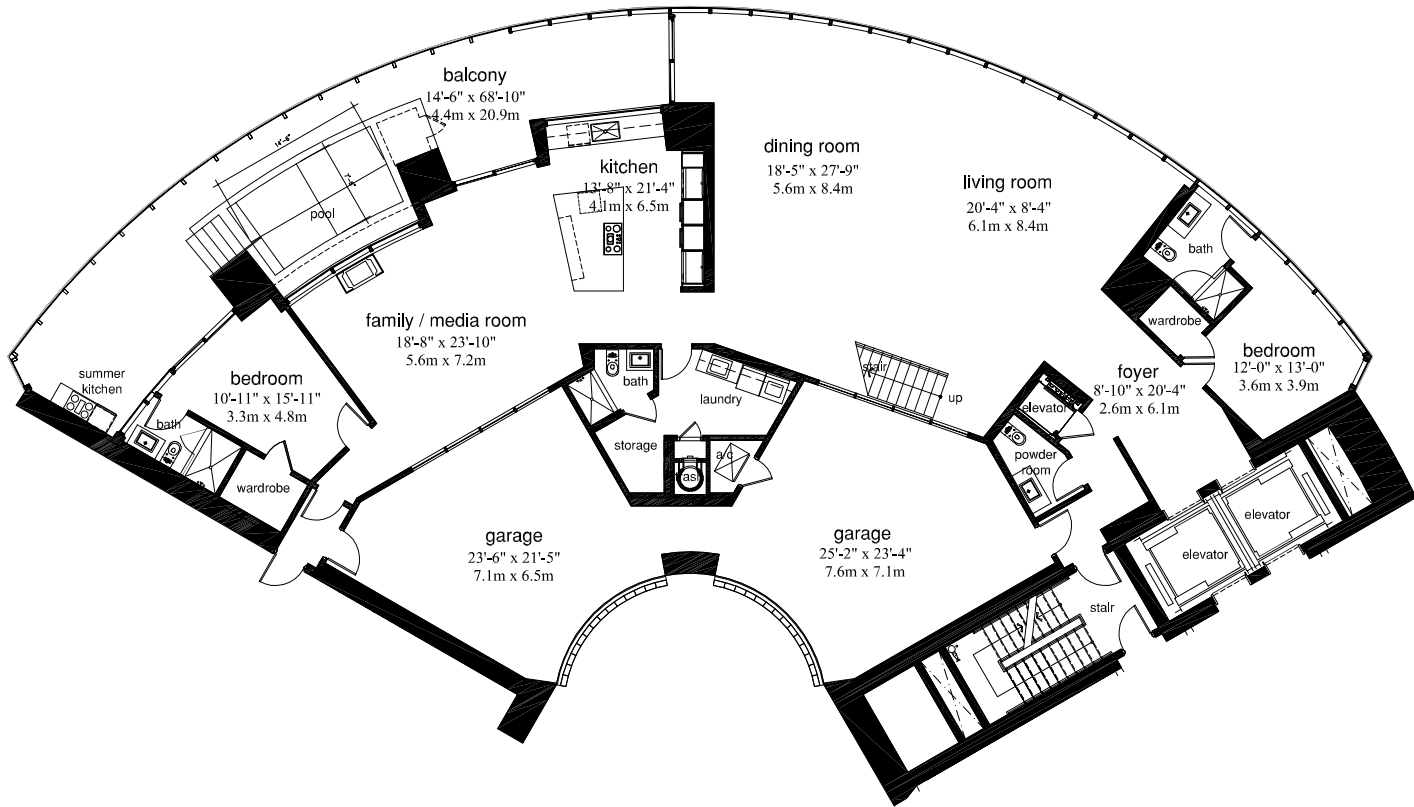
### 4 BEDROOMS AND 7 1/2 BATHS

A/C	9,560 SQ FT	888.2 M <sup>2</sup>
BALCONY/TERRACE	3,499 SQ FT	325.0 M <sup>2</sup>
GARAGE	1,128 SQ FT	104.8 M <sup>2</sup>
<b>TOTAL</b>	<b>14,187 SQ FT</b>	<b>1,318.0 M<sup>2</sup></b>



### UNIT 'PH-A' second level

A/C	3,398 SQ FT	315.7 M <sup>2</sup>
BALCONY	831 SQ FT	77.2 M <sup>2</sup>
<b>TOTAL</b>	<b>4,229 SQ FT</b>	<b>392.9 M<sup>2</sup></b>



### UNIT 'PH-A' lower level

A/C	3,384 SQ FT	314.3 M <sup>2</sup>
BALCONY	831 SQ FT	77.2 M <sup>2</sup>
GARAGE	1,128 SQ FT	104.8 M <sup>2</sup>
<b>TOTAL</b>	<b>5,343 SQ FT</b>	<b>496.3 M<sup>2</sup></b>



## The Sieger Suarez Architectural Partnership

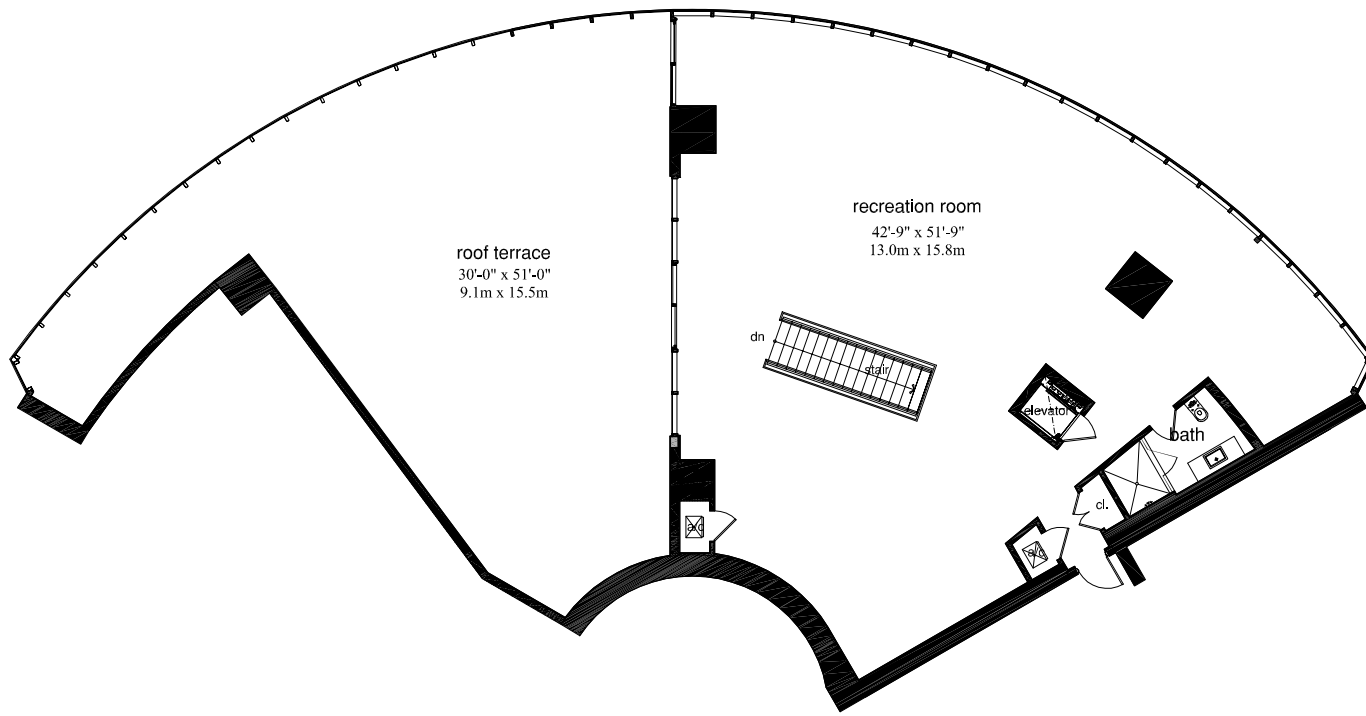
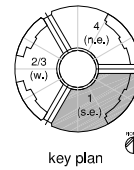
14121 Southwest 119th Avenue, Miami, Florida, 33186, 305/274-2702.

Charles M. Sieger, F.A.I.A. Lic. # AH5782      Jose J. Suarez, A.I.A. Lic. # AH1005

Stated dimensions are measured to the exterior boundaries of the exterior walls, the centerline of interior demising walls between units, and the outer boundary of interior demising walls adjacent to common elements, and in fact vary from the dimensions that would be determined by using the description and definition of the "Unit" set forth in the Declaration (which generally only includes the interior airspace between the perimeter walls and excludes interior structural components). All dimensions are approximate, and all floor plans and development plans are subject to change. The sketches, renderings, graphic materials, plans, specifications, terms, conditions and statements contained in this brochure are proposed and conceptual only and do not and will not necessarily reflect the final plans and specifications for the development. Further: Developer reserves the right to modify, revise or withdraw any or all the same in its sole discretion and without prior notice.

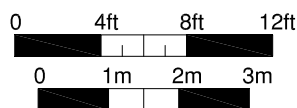
## UNIT 'PH-A' 4 BEDROOMS AND 7 1/2 BATHS

A/C	9,560 SQ FT	888.2 M <sup>2</sup>
BALCONY/TERRACE	3,499 SQ FT	325.0 M <sup>2</sup>
GARAGE	1,128 SQ FT	104.8 M <sup>2</sup>
<b>TOTAL</b>	<b>14,187 SQ FT</b>	<b>1,318.0 M<sup>2</sup></b>



### UNIT 'PH-A' roof terrace level

A/C	2,778 SQ FT	258.1 M <sup>2</sup>
TERRACE	1,837 SQ FT	170.6 M <sup>2</sup>
<b>TOTAL</b>	<b>4,615 SQ FT</b>	<b>428.7 M<sup>2</sup></b>



## The Sieger Suarez Architectural Partnership

14121 Southwest 119th Avenue, Miami, Florida, 33186, 305/274-2702.

Charles M. Sieger, F.A.I.A. Lic. # AR5782      Jose J. Suarez, A.I.A. Lic. # AR1005

Stated dimensions are measured to the exterior boundaries of the exterior walls, the centerline of interior demising walls between units, and the outer boundary of interior demising walls adjacent to common elements, and in fact vary from the dimensions that would be determined by using the description and definition of the "Unit" set forth in the Declaration (which generally only includes the interior airspace between the perimeter walls and excludes interior structural components). All dimensions are approximate, and all floor plans and development plans are subject to change. The sketches, renderings, graphic materials, plans, specifications, terms, conditions and statements contained in this brochure are proposed and conceptual only and do not and will not necessarily reflect the final plans and specifications for the development. Further: Developer reserves the right to modify, revise or withdraw any or all the same in its sole discretion and without prior notice.